

# TECH STARS



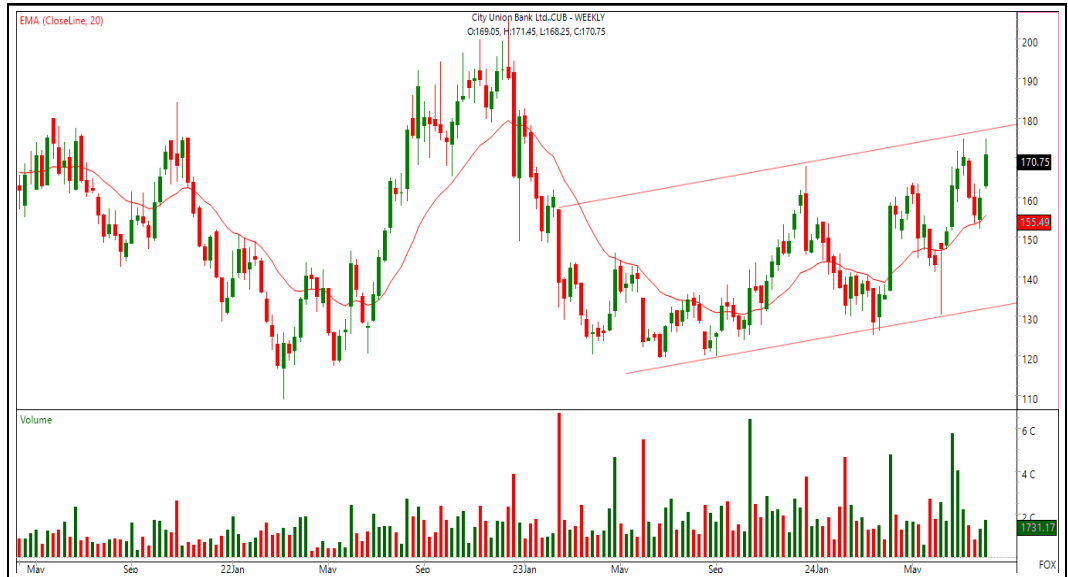
Research Analyst

Ajit Mishra

| [ajit.mishra@religare.com](mailto:ajit.mishra@religare.com) |

**SCRIP NAME AND SYMBOL– City Union Bank Limited (CUB)**

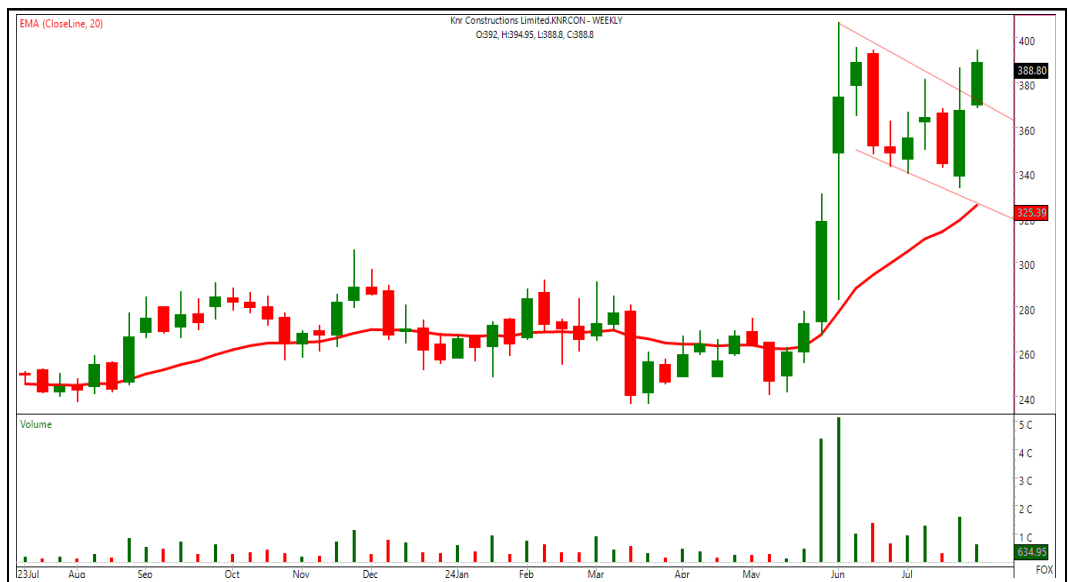
Recommendation Details	
CMP	171
BUY/SELL	BUY
Accumulation Range	168-172
Stop Loss	160
Target	188



**TECHNICAL RATIONALE** – We have been seeing mixed trend within the banking space and CUB is setting ground for the next leg of the up move. It has been inching gradually higher for the last two months, after retesting its monthly support zone around 115 levels. Indications are in the favor of further traction, citing the noticeable surge in the volumes. Traders can accumulate in the mentioned range.

**SCRIP NAME AND SYMBOL – KNR Constructions Limited (KNRCON)**

Recommendation Details	
CMP	401
BUY/SELL	BUY
Accumulation Range	395-402
Stop Loss	382
Target	445



**TECHNICAL RATIONALE** – We are seeing noticeable traction in the infra-related counters and KNR Construction is trading in sync with the move. It has formed a fresh buying pivot, after consolidating for a month and looks set for a breakout from the same. We thus recommend creating fresh longs in the mentioned range.

### Research Team

Name	Email ID
Ajit Mishra	<a href="mailto:ajit.mishra@religare.com">ajit.mishra@religare.com</a>
Gaurav Arora	<a href="mailto:gaurav.arora3@religare.com">gaurav.arora3@religare.com</a>
Abhijeet Banerjee	<a href="mailto:abhijeet.banerjee@religare.com">abhijeet.banerjee@religare.com</a>
Gaurav Sharma	<a href="mailto:gauravsharma2@religare.com">gauravsharma2@religare.com</a>
Ashwani Harit	<a href="mailto:ashwani.harit@religare.com">ashwani.harit@religare.com</a>
Divya Parmar	<a href="mailto:divya.parmar@religare.com">divya.parmar@religare.com</a>
Vinay Kalani	<a href="mailto:vinay.kalani1@religare.com">vinay.kalani1@religare.com</a>

Before you use this research report, please ensure to go through the disclosure inter-alia as required under Securities and Exchange Board of India (Research Analysts) Regulations, 2014 and Research Disclaimer at the following link : <https://www.religareonline.com/disclaimer>

Specific analyst(s) specific disclosure(s) inter-alia as required under Securities and Exchange Board of India (Research Analysts) Regulations, 2014 is/are as under:

**Statements on ownership and material conflicts of interest, compensation– Research Analyst (RA)**

[Please note that only in case of multiple RAs, if in the event answers differ inter-se between the RAs, then RA specific answer with respect to questions under F(a) to F(j) below, are given separately]

S. No.	Statement	Answer	
		Yes	No
		Tick appropriate	
		Yes	No
	I/we or any of my/our relative has any financial interest in the subject company? [If answer is yes, nature of Interest is given below this table]		No
	I/we or any of my/our relatives, have actual/beneficial ownership of one per cent. or more securities of the subject company, at the end of the month immediately preceding the date of publication of the research report or date of the public appearance?		No
	I/we or any of my/our relative, has any other material conflict of interest at the time of publication of the research report or at the time of public appearance?		No
	I/we have received any compensation from the subject company in the past twelve months?		No
	I/we have managed or co-managed public offering of securities for the subject company in the past twelve months?		No
	I/we have received any compensation for brokerage services from the subject company in the past twelve months?		No
	I/we have received any compensation for products or services other than brokerage services from the subject company in the past twelve months?		No
	I/we have received any compensation or other benefits from the subject company or third party in connection with the research report?		No
	I/we have served as an officer, director or employee of the subject company?		No
	I/we have been engaged in market making activity for the subject company?		No

Nature of Interest (if answer to F(a) above is Yes : .....  
 Name(s) with Signature(s) of RA(s).

[Please note that only in case of multiple RAs and if the answers differ inter-se between the RAs, then RA specific answer with respect to questions under F(a) to F(j) above, are given below]

SS.No.	Name(s) of RA.	Signatures of RA	Serial Question of question which the signing RA needs to make a separate declaration / answer	Yes	No.

Copyright in this document vests exclusively with RBL. This information should not be reproduced or redistributed or passed on directly or indirectly in any form to any other person or published, copied, in whole or in part, for any purpose, without prior written permission from RBL. We do not guarantee the integrity of any emails or attached files and are not responsible for any changes made to them by any other person.